



STRONGWELL®

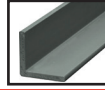
AVAILABILITY LIST

EXTREN® Structural Shapes and Plate	2
Special Composite Shapes	4
DURADEK® and DURAGRID® Pultruded Grating.....	6
DURAGRATE® Molded Grating.....	8
DURATREAD™ Molded Stair Tread Covers	10
SAFRAIL™ Industrial Handrail Systems	11
CUSTOM Handrail Systems	12
Baffle Wall Panels	13
COMPOSOLITE® Building Panel System.....	13
DURASHIELD® Foam Core Building Panel System	13
DURASHIELD HC® Hollow Core Building Panel System	13
SAFPLANK® Interlocking Decking System	14
SAFDECK® Overlapping Decking System	14
STRONGDEK™ Architectural Decking System	14
FIBREBOLT® Studs and Nuts	14
HS ARMOR PANEL Ballistic Panel	15
General Information.....	16

EXTREN®

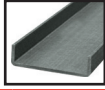
FIBERGLASS STRUCTURAL SHAPES & PLATE

EQUAL LEG ANGLES



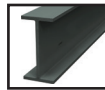
Sizes in Inches	Series 500	Series 525	Series 625	Mill Run	Lbs. Per Lin. Ft.
1 x 1/8	STOCKED	STOCKED	STOCKED	3,000	0.18
1-1/4 x 1/8	NS	NS	NS	2,800	0.22
1-1/4 x 3/16	STOCKED	STOCKED	NS	2,500	0.35
1-1/2 x 1/8	NS	STOCKED	NS	2,700	0.28
1-1/2 x 3/16	NS	NS	NS	2,200	0.41
1-1/2 x 1/4	STOCKED	STOCKED	STOCKED	2,100	0.50
2 x 1/8	NS	NS	NS	2,500	0.37
2 x 3/16	STOCKED	STOCKED	NS	2,000	0.56
2 x 1/4	STOCKED	STOCKED	STOCKED	1,800	0.73
3 x 1/4	STOCKED	STOCKED	STOCKED	1,600	1.08
3 x 3/8	STOCKED	STOCKED	STOCKED	1,500	1.66
4 x 1/4	STOCKED	STOCKED	STOCKED	1,500	1.50
4 x 3/8	STOCKED	STOCKED	STOCKED	1,400	2.08
4 x 1/2	NS	STOCKED	STOCKED	1,300	2.86
5 x 1/2	NS	NS	NS	1,000	3.80
6 x 1/4	NS	STOCKED	NS	1,400	2.29
6 x 3/8	NS	NS	NS	1,000	3.56
6 x 1/2	STOCKED	STOCKED	STOCKED	700	4.41

CHANNELS



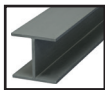
Sizes in Inches	Series 500	Series 525	Series 625	Mill Run	Lbs. Per Lin. Ft.
1-1/2 x 1 x 3/16	NS	NS	NS	2,400	0.46
1-1/2 x 1-1/2 x 1/4	NS	STOCKED	NS	2,400	0.74
2 x 9/16 x 1/8	STOCKED	STOCKED	NS	2,800	0.28
2 x 7/8 x 1/4	NS	NS	NS	2,400	0.76
2-5/8 x 1/8 x 1-1/4 x 3/16	NS	NS	NS	2,400	0.59
3 x 7/8 x 1/4	STOCKED	STOCKED	STOCKED	2,200	0.77
3 x 1 x 3/16	NS	NS	NS	2,400	0.68
3 x 1-1/2 x 1/4	NS	NS	NS	2,000	1.06
3-1/2 x 1-1/2 x 3/16	NS	STOCKED	NS	2,200	0.90
4 x 1-1/16 x 1/8	NS	NS	NS	2,400	0.53
4 x 1-3/8 x 3/16	STOCKED	STOCKED	STOCKED	2,200	0.87
4 x 1-1/8 x 1/4	STOCKED	STOCKED	NS	1,500	1.07
5 x 1-3/8 x 1/4	NS	NS	NS	1,300	1.35
5-1/2 x 1-1/2 x 3/16	NS	STOCKED	NS	1,500	1.19
5-1/2 x 1-1/2 x 1/4	NS	STOCKED	NS	1,500	1.55
6 x 1-5/8 x 1/4	STOCKED	STOCKED	STOCKED	1,200	1.68
6 x 1-11/16 x 3/8	NS	NS	NS	1,000	2.38
8 x 2-3/16 x 1/4	NS	STOCKED	NS	1,000	2.24
8 x 2-3/16 x 3/8	STOCKED	STOCKED	STOCKED	1,000	3.41
10 x 2-3/4 x 1/2*	NS	STOCKED	STOCKED	800	5.50
12 x 3 x 1/2**	NS	NS	NS	800	6.50
14 x 3-1/2 x 3/4	NS	NS	NS	500	10.73
18 x 2-3/16 x 3/16	NS	NS	NS	1,000	3.88
24 x 3 x .260	NS	NS	NS	800	6.16

I-BEAMS



Sizes in Inches	Series 500	Series 525	Series 625	Mill Run	Lbs. Per Lin. Ft.
2 x 1 x 1/8	NS	NS	NS	2,000	0.37
3 x 1-1/2 x 1/4	NS	NS	NS	1,400	1.11
4 x 2 x 1/4	STOCKED	STOCKED	STOCKED	1,300	1.48
5-1/2 x 2-1/2 x 1/4	NS	STOCKED	NS	1,200	2.00
6 x 3 x 1/4	NS	NS	NS	800	2.31
6 x 3 x 3/8	NS	NS	NS	800	3.39
6 x 4 x 1/4	NS	NS	NS	800	3.20
8 x 4 x 3/8	STOCKED	STOCKED	NS	800	4.40
8 x 4 x 1/2	NS	NS	NS	700	5.96
10 x 5 x 3/8	NS	NS	NS	700	5.55
10 x 5 x 1/2	NS	NS	NS	600	7.81
12 x 6 x 1/2	NS	NS	NS	500	9.07
18 x 3/8 x 4-1/2 x 1/2	NS	NS	NS	600	8.52
24 x 3/8 x 7-1/2 x 3/4	NS	NS	NS	500	15.77

WIDE FLANGE BEAMS



Sizes in Inches	Series 500	Series 525	Series 625	Mill Run	Lbs. Per Lin. Ft.
2 x 1/8	NS	NS	NS	1,600	0.58
3 x 1/4	STOCKED	STOCKED	NS	1,000	1.69
4 x 1/4	STOCKED	STOCKED	STOCKED	800	2.35
6 x 1/4	STOCKED	STOCKED	STOCKED	700	3.39
6 x 3/8	STOCKED	STOCKED	STOCKED	600	5.19
8 x 3/8	STOCKED	STOCKED	STOCKED	500	6.97
8 x 1/2	NS	NS	NS	500	9.37
10 x 3/8	NS	NS	NS	500	12.06
10 x 1/2	NS	NS	NS	500	8.78
12 x 1/2	NS	NS	NS	500	13.98

All items are stocked in 20 foot lengths unless otherwise noted

Items are non-stocked items

* Stocked in 20' and 24' lengths

** Stocked in 32' length only

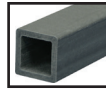
Series 500 - Polyester resin, olive green

Series 525 - Polyester resin, flame retardant, slate gray

Series 625 - Vinyl Ester resin, flame retardant, beige

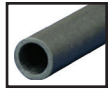
NOTE: Moderate inventory of nonstocked items normally available due to overruns.

SQUARE TUBE



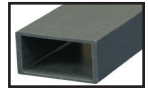
Sizes in Inches	Series 500	Series 525	Series 625	Mill Run	Lbs. Per Lin. Ft.
1 x 1/8	STOCKED	STOCKED	NS	2,000	0.35
1-1/4 x 1/8	NS	NS	NS	2,500	0.41
1-1/2 x 1/8	STOCKED	STOCKED	NS	2,000	0.56
1-1/2 x 1/4	NS	NS	NS	2,500	0.98
1-3/4 x 1/8	NS	NS	NS	2,500	0.64
1-3/4 x 1/4	NS	NS	NS	1,600	1.19
2 x 1/8	STOCKED	STOCKED	NS	2,000	0.72
2 x 1/4*	STOCKED	STOCKED	STOCKED	1,200	1.37
2-1/2 x 1/4	NS	STOCKED	NS	1,000	1.73
3 x 1/8	NS	NS	NS	1,600	1.16
3 x 1/4	STOCKED	STOCKED	STOCKED	800	2.26
3 x 3/8	NS	NS	NS	700	3.20
3-1/2 x 1/4	NS	STOCKED	STOCKED	800	2.81
4 x 1/4	STOCKED	STOCKED	STOCKED	800	2.99
4 x 3/8	NS	NS	NS	700	4.24
6 x 3/8	NS	NS	NS	700	6.62

ROUND TUBE



Sizes in Inches	Series 500	Series 525	Series 625	Mill Run	Lbs. Per Lin. Ft.
1 x 1/8	STOCKED	STOCKED	NS	2,000	0.25
1-1/4 x 1/8	NS	NS	NS	2,000	0.32
1-1/2 x 1/8	STOCKED	STOCKED	NS	2,000	0.45
1-1/2 x 1/4	STOCKED	STOCKED	NS	1,900	0.79
1-3/4 x 1/8	NS	NS	NS	2,500	0.52
1-3/4 x 1/4	NS	NS	NS	2,000	0.94
2 x 1/8	NS	NS	NS	1,900	0.60
2 x 1/4	STOCKED	STOCKED	NS	1,800	1.12
2-1/2 x 1/4	STOCKED	STOCKED	NS	1,700	1.43
3 x 1/4	NS	NS	NS	1,000	1.70
3-1/2 x .140	NS	NS	NS	2,000	1.21
4 x 1/4	NS	NS	NS	1,200	2.36
5 x 1/4	NS	NS	NS	1,000	3.08
6 x 1/8	NS	NS	NS	1,400	1.92
6 x 1/4	NS	NS	NS	1,000	3.76

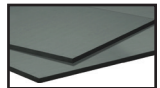
RECTANGULAR TUBE



Sizes in Inches	Series 500	Series 525	Series 625	Mill Run	Lbs. Per Lin. Ft.
2-1/2 x 1-5/8 x 1/8	NS	NS	NS	2,500	0.75
4 x 1/8 x 2 x 1/4	STOCKED	STOCKED	NS	1,500	1.52
3-1/2 x 5-1/2 x 1/4	NS	STOCKED	NS	700	3.42
6-1/2 x 1/4 x 2 x 1/2	NS	NS	NS	700	3.86
7 x 4 x 1/4	NS	NS	NS	700	4.09
9 x 6 x 5/16	NS	NS	NS	700	6.80
9 x 6 x 7/16	NS	NS	NS	700	9.72

PLATE

EXTREN® pultruded plate is stocked in six thicknesses - see below. EXTREN® plate is a stocked item and is usually available on short notice. Stock size is 48" x 96". 60" wide plate is also available, non-stocked. Other sizes are available and will be quoted upon request.



Thickness in Inches	Series 500	Series 525	Series 625	Mill Run No. of Sheets	Weight Lbs. Per Sq. Foot
1/8	STOCKED	STOCKED	STOCKED	188	1.20
3/16	STOCKED	STOCKED	NS	140	1.71
1/4	STOCKED	STOCKED	STOCKED	94	2.34
3/8	STOCKED	STOCKED	NS	63	3.54
1/2	STOCKED	STOCKED	STOCKED	47	4.82
5/8	NS	NS	NS	40	5.79
3/4	STOCKED	STOCKED	NS	30	7.24
1	NS	STOCKED	NS	20	8.50

All items are stocked in 20 foot lengths unless otherwise noted

* Also stocked in Series 525 yellow

■ Items are non-stocked items

Series 500 - Polyester resin, olive green

Series 525 - Polyester resin, flame retardant, slate gray

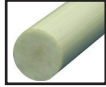
Series 625 - Vinyl Ester resin, flame retardant, beige

NOTE: Moderate inventory of nonstocked items normally available due to overruns.

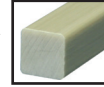
ROD AND BAR

THERMAL CURE ROD AND BAR is produced using all longitudinal reinforcements with low speed and high temperature, which provides a rich surface appearance. It has no surfacing veil, no pigment and is not fire retardant. On request, Strongwell can quote special formulations including resin type, fire retardant properties, etc. Because it maintains high electrical standards, thermal cure rod is most commonly specified for electrical applications. Normally stocked for prompt delivery. *Thermal cure rod and bar was not designed to be machined.*

ROUND ROD*



SQUARE BAR*



Sizes in Inches	Thermal Cure	Mill Run	Lbs. Per Lin. Ft.
1/4	STOCKED	20,000	0.04
5/16	STOCKED	10,000	0.07
3/8	STOCKED	15,000	0.10
1/2	STOCKED	10,000	0.17
5/8	STOCKED	10,000	0.27
3/4	STOCKED	6,000	0.39
13/16	NS	1,800	0.45
7/8	NS	1,700	0.53
1	STOCKED	1,500	0.69
1-1/8	NS	1,300	0.87
1-1/4	STOCKED	1,200	1.03
1-1/2	STOCKED	900	1.52
2	NS	600	2.78

Sizes in Inches	Thermal Cure	Mill Run	Lbs. Per Lin. Ft.
1/2	STOCKED	2,500	0.22
5/8	STOCKED	2,100	0.34
3/4	NS	1,800	0.49
1	STOCKED	1,400	0.87
1-1/4	NS	1,000	1.35
1-1/2	STOCKED	800	1.83

Sizes 3/4" diameter and smaller will be stocked in Chatfield, MN

SPECIAL COMPOSITE SHAPES

(Special Composite Design — Not EXTREN® Composite)

All Special Composite Shapes are Nonstocked items unless otherwise noted.

Tooling is available for the following special nonstocked items

	PE	PE/FR	VE/FR	Mill Run Quantity Required	Lbs. Per Lin. Foot
STAIR RISER					
8 x 1-1/2 x 1/8	NS	NS	NS	5,000	0.91
TOP RAIL					
2 x 1/4 Modified Rd Tube	NS	NS	NS	4,000	1.29
FLIGHT CHANNEL					
5-1/4 x 1/8 x 2-1/2 x 3/16	NS			2,000	1.33
7-1/8 x 1/8 x 2-1/2 x 3/16	NS			2,000	1.60
CHANNEL					
3-1/2 x 2 x 7/32	NS	NS	NS	1,500	1.20
1.875 x .125 x 1.125 x .188**	NS			25,000	0.48
3.290 x .128 x 1.180 x .190**	NS			25,000	0.65
3.310 x .135 x 1.187 x .210**	NS			25,000	0.69
4.000 x .125 x 1.750 x .187**	NS			25,000	0.94
STRUT					
1-5/8 x 1-5/8 x 5/32	NS	NS	NS	2,500	0.65
SQUARE TUBE/ROUND HOLE					
1" Sq. with 3/4" Rd. Hole	NS	NS	NS	5,000	0.49








All items are stocked in 20 foot lengths unless otherwise noted
 Items are non-stocked items

* Special Composite Design - Not EXTREN® Composite
 ** Nonstocked item; standard color - orange

SPECIAL COMPOSITE SHAPES

(Special Composite Design — Not EXTREN® Composite)

Tooling is available for the following special nonstocked items

	PE	PE/FR	VE/FR	Mill Run Quantity Required	Lbs. Per Lin. Foot
SLIDE GUIDE 					
2-1/2 x 2-1/4 x 1/4*	NS			2,500	1.24
UNEQUAL LEG ANGLE 					
1-3/4 x 1-1/4 x 1/4	NS	NS	NS	3,000	0.51
FLAT STRIP 					
2 x 3/16**	NS	STOCKED	STOCKED	7,500	0.32
2 x 1/4	NS	NS	NS	7,500	0.39
3 x 3/16	NS	NS	NS	7,500	0.41
3 x 1/4	NS	STOCKED	NS	5,000	0.59
3 x 3/8	NS	NS	NS	5,000	0.88
3 x 1/2	NS	STOCKED	NS	5,000	1.12
3-1/2 x 1/2	NS	NS	NS	4,000	1.31
4 x 1/2	NS	NS	NS	4,000	1.49
6 x 1/4	NS	NS	NS	5,000	1.24
FLUTED TUBE 					
1-1/4***	NS	NS	STOCKED		0.40
F-SECTION 					
5-1/2 x 1 x 1/4****	NS	NS	NS		1.58
6 x 1-1/2 x 1/4	NS	NS	NS		1.69
Z-SECTION 					
1-1/4 x 2-1/2 x 1/8	NS	NS	NS		0.48
CORNER POST 					
3-1/4 X 1/4	NS	NS	NS		2.35

All items are stocked in 20 foot lengths unless otherwise noted
 Items are non-stocked items

* Stocked item in white only
 ** Stocked item in yellow in 24' lengths
 *** Stocked item in yellow in 242" lengths
 **** Stocked in Chatfield, MN

DURA DEK®

PULTRUDED FIBERGLASS GRATING & STAIR TREADS

STOCKING LEVELS OF GRATING MAY VARY. CALL FOR AVAILABILITY.

STANDARD SIZE PANELS



Panel Size (Width x Length)	PE I-6000 - 1" VE I-6000 - 1"	PE I-6000 - 1-1/2" VE I-6000 - 1-1/2"	PE T-5000 - 2" VE T-5000 - 2"
	wt. (lbs.)	wt. (lbs.)	wt. (lbs.)
3' x 8'	63	77	80
3' x 10'	78	96	99
3' x 12'	94	116	119
3' x 20'	156	192	198
4' x 8'	84	103	106
4' x 10'	104	128	132
4' x 12'	125	154	159
4' x 20'	208	256	264
5' x 8'	104	128	132
5' x 10'	130	160	165
5' x 12'	156	192	198
5' x 20'	260	320	330

STANDARD SIZE STAIR TREADS

Stair Treads (Width x Length)	PE I-6000 - 1" VE I-6000 - 1"	PE I-6000 - 1-1/2" VE I-6000 - 1-1/2"	PE T-5000 - 2" VE T-5000 - 2"
	wt. (lbs.)	wt. (lbs.)	wt. (lbs.)
11" x 144"	32	39	—
12" x 144"	—	—	40

Colors: Yellow or Gray
Resins: Fire Retardant Polyester - Standard
 Fire Retardant Vinyl Ester - Optional

UV Protection: UV Inhibited with a Veil; Total UV Coating Optional
Top Surface: Epoxy Bonded Grit Coating
Cross Rods: 6" o.c.

DURA DEK®

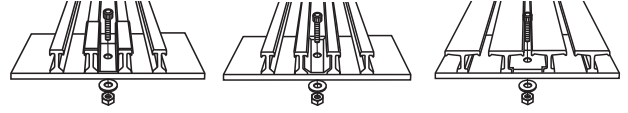
PULTRUDED FIBERGLASS GRATING & STAIR TREADS

ACCESSORY ITEMS

ALL ITEMS GENERALLY ARE IN INVENTORY FOR IMMEDIATE SHIPMENT

PANEL HOLD DOWNS

(Price Does Not Include Nuts, Bolts & Washers)



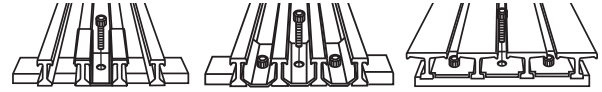
(No Broken Packages)

**Pounds Approx.
(25 per Package)**

S.S. Insert Hold Down, all series (Specify I-6000 or T-5000)	1.00
S.S. Saddle Clip Only, I-6000 - 1"	2.00
S.S. Saddle Clip Only, I-6000 - 1-1/2"	2.25
S.S. Saddle Clip Only, T-5000 - 2"	3.25
1/4" - 20 x 1-1/4" S.S. Socket Head Cap Screw with Nut & Washer (For use with Hold Downs)	0.75

PANEL CONNECTORS ASSEMBLY

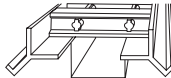
(Assembly includes Hold Down(s), Bolt(s) and Bottom Bar)



**Pounds
Approx.**

S.S. Insert Panel Connector, all series	0.40
S.S. Saddle Clip Panel Connector, I-6000 - 1"	0.29
S.S. Saddle Clip Panel Connector, I-6000 - 1-1/2"	0.30
S.S. Saddle Clip Panel Connector, T-5000 - 2"	0.30

FIBERGLASS CURB ANGLE



**Pounds Approx.
(In. ft.)**

1" x 1-1/2"	STOCKED	0.83
1-1/2" x 1-1/2"	STOCKED	0.93
2" x 1-1/2"	STOCKED	1.03
4" x 2-1/4" x 1/4" (Slate Gray)	NS	5.33

Color: Gray	UV Inhibited with a Veil
Resin: Fire Retardant, Vinyl Ester	Stock Length: 20 feet

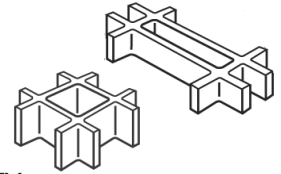
MISCELLANEOUS

**Pounds
Approx.**

Sealing Kit - 1 pint	1.64
7" Tungston Carbide Tip Circular Blade	0.64
Tungston Carbide Tip Saber Saw Blade	0.03

DURA GRATE®

MOLDED FIBERGLASS GRATING



STOCKING LEVELS OF GRATING MAY VARY. CALL FOR AVAILABILITY.

GP — GENERAL POLYESTER RESIN SYSTEM (GREEN, DARK GRAY, YELLOW, FLAME SPREAD CLASS 1, 25 OR LESS)

Thickness	Mesh	Panel Size	Estimated Weight (lbs.)
1"	1" x 4"	3' x 10'	84
1"	1" x 4"	4' x 8'	90
1"	1" x 4"	4' x 12'	135
1"	1-1/2" x 1-1/2"	3' x 10'	78
1"	1-1/2" x 1-1/2"	4' x 8'	83
1"	1-1/2" x 1-1/2"	4' x 12'	125
1-1/2"	3/4" x 3/4"	4' x 12'	209
1-1/2"	1-1/2" x 1-1/2"	3' x 10'	114
1-1/2"	1-1/2" x 1-1/2"	4' x 8'	122
1-1/2"	1-1/2" x 1-1/2"	4' x 12'	183
1-1/2"	1-1/2" x 1-1/2"	5' x 10'	190
1-1/2"	1-1/2" x 6"	4' x 12'	168
2"	2" x 2"	4' x 12'	192
STAIR TREAD*			
1-1/2"	1-1/2" x 6"	22-1/2" x 10'	60

PP — PREMIUM POLYESTER RESIN SYSTEM (GREEN OR YELLOW, FLAME SPREAD CLASS 1, 25 OR LESS)

Thickness	Mesh	Panel Size	Estimated Weight (lbs.)
1"	1" x 4"	3' x 10'	84
1"	1" x 4"	4' x 8'	90
1"	1" x 4"	4' x 12'	135
1"	1-1/2" x 1-1/2"	3' x 10'	78
1"	1-1/2" x 1-1/2"	4' x 8'	83
1"	1-1/2" x 1-1/2"	4' x 12'	125
1-1/2"	3/4" x 3/4"	4' x 12'	209
1-1/2"	1-1/2" x 1-1/2"	3' x 10'	114
1-1/2"	1-1/2" x 1-1/2"	4' x 8'	122
1-1/2"	1-1/2" x 1-1/2"	4' x 12'	183
1-1/2"	1-1/2" x 1-1/2"	5' x 10'	190
1-1/2"	1-1/2" x 6"	4' x 12'	168
2"	2" x 2"	4' x 12'	192
STAIR TREAD*			
1-1/2"	1-1/2" x 6"	22-1/2" x 10'	60

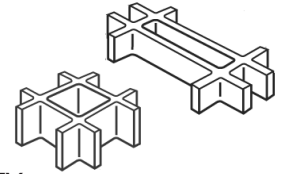
VE — VINYL ESTER RESIN SYSTEM (ORANGE OR DARK GRAY, FLAME SPREAD CLASS 1, 25 OR LESS)

Thickness	Mesh	Panel Size	Estimated Weight (lbs.)
1"	1" x 4"	3' x 10'	84
1"	1" x 4"	4' x 8'	90
1"	1" x 4"	4' x 12'	135
1"	1-1/2" x 1-1/2"	3' x 10'	78
1"	1-1/2" x 1-1/2"	4' x 8'	83
1"	1-1/2" x 1-1/2"	4' x 12'	125
1-1/2"	3/4" x 3/4"	4' x 12'	209
1-1/2"	1-1/2" x 1-1/2"	3' x 10'	114
1-1/2"	1-1/2" x 1-1/2"	4' x 8'	122
1-1/2"	1-1/2" x 1-1/2"	4' x 12'	183
1-1/2"	1-1/2" x 1-1/2"	5' x 10'	190
1-1/2"	1-1/2" x 6"	4' x 12'	168
2"	2" x 2"	4' x 12'	192
STAIR TREAD*			
1-1/2"	1-1/2" x 6"	22-1/2" x 10'	60

*NOTE: Nosing is gritted and same color as stair tread.

DURA GRATE®

MOLDED FIBERGLASS GRATING



STOCKING LEVELS OF GRATING MAY VARY. CALL FOR AVAILABILITY.

FF — FOOD GRADE RESIN SYSTEM (LIGHT GRAY, FLAME SPREAD CLASS 2, 30 OR LESS)

Thickness	Mesh	Panel Size	Estimated Weight (lbs.)
1"	1" x 4"	3' x 10'	84
1"	1" x 4"	4' x 8'	90
1"	1" x 4"	4' x 12'	135
1"	1-1/2" x 1-1/2"	3' x 10'	78
1"	1-1/2" x 1-1/2"	4' x 8'	83
1"	1-1/2" x 1-1/2"	4' x 12'	125
1-1/2"	3/4" x 3/4"	4' x 12'	209
1-1/2"	1-1/2" x 1-1/2"	3' x 10'	114
1-1/2"	1-1/2" x 1-1/2"	4' x 8'	122
1-1/2"	1-1/2" x 1-1/2"	4' x 12'	183
1-1/2"	1-1/2" x 1-1/2"	5' x 10'	190
1-1/2"	1-1/2" x 6"	4' x 12'	168
2"	2" x 2"	4' x 12'	192
STAIR TREAD*			
1-1/2"	1-1/2" x 6"	22-1/2" x 10'	60

- Other resins, colors and accessories available on special orders.
Call factory for details.

DURATREAD™

MOLDED FIBERGLASS STAIR TREAD COVERS

STOCKING LEVELS MAY VARY. CALL FOR AVAILABILITY.

DURATREAD™ STAIR TREAD COVER* GP — GENERAL POLYESTER RESIN SYSTEM

Tread (inches)	Thickness 1/8" Weight (.lbs)	Thickness 1/4" Weight (.lbs)
8	16	31
9	18	34
10	19	37
11	21	40
12	23	44

DURATREAD™ STAIR TREAD COVER* PP — PREMIUM POLYESTER RESIN SYSTEM

Tread (inches)	Thickness 1/8" Weight (.lbs)	Thickness 1/4" Weight (.lbs)
8	16	31
9	18	34
10	19	37
11	21	40
12	23	44

DURATREAD™ STAIR TREAD COVER* VE — VINYL ESTER POLYESTER RESIN SYSTEM

Tread (inches)	Thickness 1/8" Weight (.lbs)	Thickness 1/4" Weight (.lbs)
8	16	31
9	18	34
10	19	37
11	21	40
12	23	44

DURATREAD™ STAIR TREAD COVER* FF — FOOD GRADE POLYESTER RESIN SYSTEM

Tread (inches)	Thickness 1/8" Weight (.lbs)	Thickness 1/4" Weight (.lbs)
8	16	31
9	18	34
10	19	37
11	21	40
12	23	44

**All covers are 12' long. • No minimum on black with yellow nose covers. • The minimum order quantity for all other colors is 5 pieces.*

SAF RAIL™

FIBERGLASS HANDRAIL SYSTEMS

ALL ITEMS GENERALLY ARE IN INVENTORY FOR IMMEDIATE SHIPMENT

SQUARE HANDRAIL SYSTEM COMPONENTS

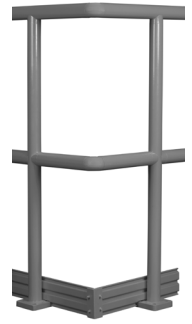
Component	Weight (lbs.)
2" x 2" x .156" Square Tube, Yellow Polyester Fire Retardant UV Inhibited @ 240"	0.95 / ft.
2-3/8" x 2-3/8" x 3/16" Square Tube, Yellow Polyester Fire Retardant UV Inhibited @ 240"	1.36 / ft.
4" Kickplate Yellow Polyester Fire Retardant UV Inhibited @ 240"	0.65 / ft.
6" Kickplate Yellow Polyester Fire Retardant UV Inhibited @ 240" (1,200 ft. mill run)	0.73 / ft.
Black End Caps	0.03 ea.
Adjustable Corner Assembly (Total Assembly)	0.36 ea.
90° Corner Plug	0.35 ea.
Kickplate Splice	0.11 ea.
Kickplate 90° Splice	0.15 ea.
Split Round Tube 8" Length	0.35 ea.
Split Round Tube 4" Length	0.18 ea.
Split Round Tube 144" Length	6.12 ea.
6" Square Plug	0.76 ea.
Square Plug 144" Length	18.24 ea.
1/8" x 1-1/2" Tension Pins	.04 / 10 pcs.
Epoxy Kits - 1 Pint Clear	1.64 ea.
FRP Base Plate with Post - Total Height 40" (Polyester)	5.50 ea.
Alternate Handrail Post, 2-3/8" x 2-3/8" x 50", Routed Out, No Bottom Plugs	5.70 ea.
90° Corner Sample	1.30 ea.
Tee Sample	0.90 ea.

NOTE: UV Coating is recommended for exterior applications and is available at an additional cost.

SAFRAIL™

FIBERGLASS HANDRAIL SYSTEMS

ALL ITEMS GENERALLY ARE IN INVENTORY FOR IMMEDIATE SHIPMENT



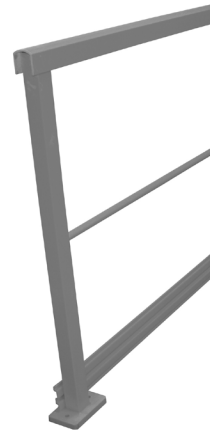
ROUND HANDRAIL SYSTEM COMPONENTS

Component	Weight (lbs.)
1.9" OD x 1.5" ID Yellow Polyester Fire Retardant UV Inhibited	0.88 / ft.
4" Kickplate Yellow Polyester Fire Retardant UV Inhibited @ 240"	0.65 / ft.
Black End Caps	0.05 ea.
Adjustable Corner Assembly (Total Assembly)	0.36 ea.
90° Corner Assembly	0.35 ea.
Intermediate Connectors	0.05 ea.
Kickplate Splice	0.11 ea.
Kickplate 90° Splice	0.15 ea.
Split Tube, 1.5 x 4"	0.15 ea.
Split Tube, 1.5 x 8"	0.30 ea.
Round Connector, 1.5 x 8"	0.53 ea.
1/8" x 1-1/2" Tension Pins	0.04 / 10 pcs.
FRP Base Plate with Post, Total Height 39-9/16" (YFRPE)	5.50 / pc.
Stainless Steel Kickplate Bracket	0.12 ea.
1/4" x 1" Stainless Steel Bolt Assembly	.05 ea.

CHANNEL TOP HANDRAIL SYSTEM COMPONENTS

For more information on the Channel Top option, please refer to the SAFRAIL™ brochure.

Component	
1" Diameter Mid Rail, Yellow Polyester Fire Retardant, UV Coated	(5,000 linear feet min. run)
Channel Top Handrail, Yellow Polyester Fire Retardant, UV Coated	(5,000 linear feet min. run)
2" x 2" x .156" Tube (for post), Yellow Polyester Fire Retardant, UV Coated	
4" Kick Plate, Yellow Polyester Fire Retardant, UV Coated	



CUSTOM FIBERGLASS HANDRAIL SYSTEMS

CUSTOM FABRICATED HANDRAIL

Handrail may be ordered in custom colors and/or resins and may also be pre-fabricated. Prices and ship dates for custom fabricated handrail may be obtained by calling Strongwell Customer Service.

NOTE: UV Coating is recommended for exterior applications and is available at an additional cost.

FIBERGLASS BAFFLE WALL PANELS

PANELS

Width in Inches	PE	Mill Run	Lbs. Per Lin. Ft.
12"	NS	1000	3.70
24*	STOCKED	1000	6.50

COMPOSOLITE®

FIBERGLASS BUILDING PANEL SYSTEM

PANEL SYSTEM COMPONENTS

Components	PE	PE/FR	VE/FR	Mill Run	Lbs. Per Lin. Ft.
Panel**	NS	STOCKED	NS	1000	7.52
Toggle	NS	STOCKED	NS	1000	0.33
3-Way Connector	NS	STOCKED	NS	1000	1.70
Hangar	NS	NS	NS	1000	1.55
45° Connector	NS	NS	NS	1000	1.75
3.42" x 1.3" x .125" Cap Channel ***	NS	STOCKED	NS	1000	0.60
3.665" x 2" x 1/4" Structural Cap Channel	NS	NS	NS	1000	1.30

DURASHIELD®

FIBERGLASS FOAM CORE BUILDING PANEL SYSTEM

PANELS

Thickness in Inches	PE	PE/FR	VE/FR	Mill Run	Lbs. Per Lin. Ft.
1"	NS	NS	NS	1000	2.20
3"	NS	NS	NS	500	7.85

DURASHIELD HC®

FIBERGLASS HOLLOW CORE BUILDING PANEL SYSTEM

PANELS

Thickness in Inches	PE	PE/FR	VE/FR	Mill Run	Lbs. Per Lin. Ft.
1"	NS	NS	NS	1000	3.27

* Stocked in 24' length

** Stocked in 20' and 24' lengths

*** Also stocked in series 525 yellow, 20' lengths

FIBERGLASS DECKING PRODUCTS

SAFPLANK®

FIBERGLASS INTERLOCKING DECKING SYSTEM

SAFDECK®

FIBERGLASS OVERLAPPING DECKING SYSTEM

STRONGDEK™

FIBERGLASS ARCHITECTURAL DECKING SYSTEM

DECKING PANELS

Panel	PE	PE/FR	VE/FR	Mill Run	Lbs. Per Lin. Ft.
12" SAFPLANK® *	NS	STOCKED	NS	5000	2.50
24" SAFPLANK® *	NS	STOCKED	NS	2500	5.00
SAFDECK® **	NS	STOCKED	NS	2500	3.75
STRONGDEK™ **	NS	STOCKED	NS	2500	2.53

* Stocked in 20' and 24' lengths

** Stocked in 24' lengths

DECKING ACCESSORIES

Sizes in Inches	PE	PE/FR	VE/FR	Mill Run	Lbs. Per Lin. Ft.
2.2" x 1.063" x .563" x .080" Cap Channel	NS	NS	NS	5000	0.24
STRONGDEK™ Starter Channel	NS	NS	NS	5000	

FIBRE BOLT®

FIBERGLASS STUDS AND NUTS

STUDS

Sizes in Inches	Studs Per Package	Package Weight (lbs.)
3/8	15	4.5
1/2	10	5.0
5/8	10	7.5
3/4	6	7.0
1	4	8.5

HEX NUTS

Sizes in Inches	Nuts Per Package	Package Weight (lbs.)
3/8	100	1.5
1/2	100	2.0
5/8	100	3.8
3/4	25	3.0
1	25	3.0

HS ARMOR PANELS

FIBERGLASS BALLISTIC PANEL

UL LEVEL 1 (OFF WHITE)

Panel		Mill Run	Lbs. Per Lin. Ft.
1/4" x 36" x 96"	STOCKED	1000	8.14
1/4" x 48" x 96"	STOCKED	1000	11.00
1/4" x 36" x 120"	STOCKED	1000	8.14
1/4" x 48" x 120"	STOCKED	1000	11.00

UL LEVEL 2 (OFF WHITE)

Panel		Mill Run	Lbs. Per Lin. Ft.
.35" x 36" x 96"	STOCKED	1000	11.06
.35" x 48" x 96"	STOCKED	1000	14.32
.35" x 36" x 120"	STOCKED	1000	11.06
.35" x 48" x 120"	STOCKED	1000	14.32

UL LEVEL 3 (OFF WHITE)

Panel		Mill Run	Lbs. Per Lin. Ft.
1/2" x 36" x 96" - Color: Off-white	STOCKED	1000	15.70
1/2" x 48" x 96" - Color: Off-white	STOCKED	1000	21.70
1/2" x 36" x 120" - Color: Off-white	STOCKED	1000	15.70
1/2" x 48" x 120" - Color: Off-white	STOCKED	1000	21.70

GENERAL INFORMATION

EXTREN® SERIES 500

An all-purpose series utilizing an isophthalic polyester resin system with a UV inhibitor.

Color: olive green

EXTREN® SERIES 525

An all-purpose series utilizing a fire retardant isophthalic polyester resin system with a UV inhibitor.

Color: slate gray (plus certain handrail and fixed ladder components in yellow)

EXTREN® SERIES 625

A premium series — both fire retardant and highly corrosion resistant — utilizing a vinyl ester resin system with a UV inhibitor.

Color: beige

Note: All EXTREN® Series 500 products can be produced to meet NSF potable water standards in minimum mill run quantities. Only products bearing the NSF logo are certified.

STOCKED ITEMS

Carried in inventory, no minimum quantity required.

LENGTHS CUT FROM STOCK: Special lengths can be cut from stock shapes and rods. Plate can be cut to size desired from 48" x 96" stock. A fabrication cutting charge will be applied.

NONSTOCKED ITEMS

Tooling available. Order in mill run quantities or check for possible availability.

SMALL QUANTITIES OF NONSTOCKED ITEMS: These are occasionally available because of overruns. Purchaser having a requirement for small quantities of nonstocked items should inquire about current inventory status. Such items are subject to prior sale, so delivery cannot be guaranteed.

MILL RUN

Required footage for nonstocked items except when overrun stock is available. Required for stocked items only when special length or color is requested.

SPECIAL MILL RUN VARIANCE: The pultrusion process does not lend itself to producing exact quantities. Mill runs may vary 10% on small orders, and as much as 3-5% on large orders. If minimum quantities are required, orders should be placed considering these variances.

METRIC SIZES

Metric sizes of DURADEK® are available upon request. Contact Customer Service.

MINIMUM ORDER VALUE

Minimum order value is \$250.

COLORS

Special colors are available for all mill runs of shapes and plate. Extra cost will vary, depending on cost, amount of pigment required, and standards of acceptability.

SPECIAL RESINS AND FORMULAE

Special resins and resin mixes will be quoted specifically after resin mix has been tested for adaptability to the production process involved.

PACKAGING

If other than standard packaging is required, contact Customer Service for additional costs.

TERMS

All products are manufactured in accordance to tolerance properties as published in Strongwell's *Design Manual*. Strongwell's Standard Terms and Condition of Sale apply. F.O.B./Ex Works dispatch location.



STRONGWELL

ISO-9001:2008 Quality Certified and ISO-14001:2004 Environmentally Certified Manufacturing Plants

CORPORATE OFFICES AND BRISTOL DIVISION

400 Commonwealth Ave., P.O. Box 580, Bristol, VA 24201-3820 USA
(276)645-8000 FAX (276)645-8132

CHATFIELD DIVISION

1610 Highway 52 South, Chatfield, MN 55923-9799 USA
(507)867-3479 FAX (507)867-4031

www.strongwell.com

ST0213
© 2013 Strongwell